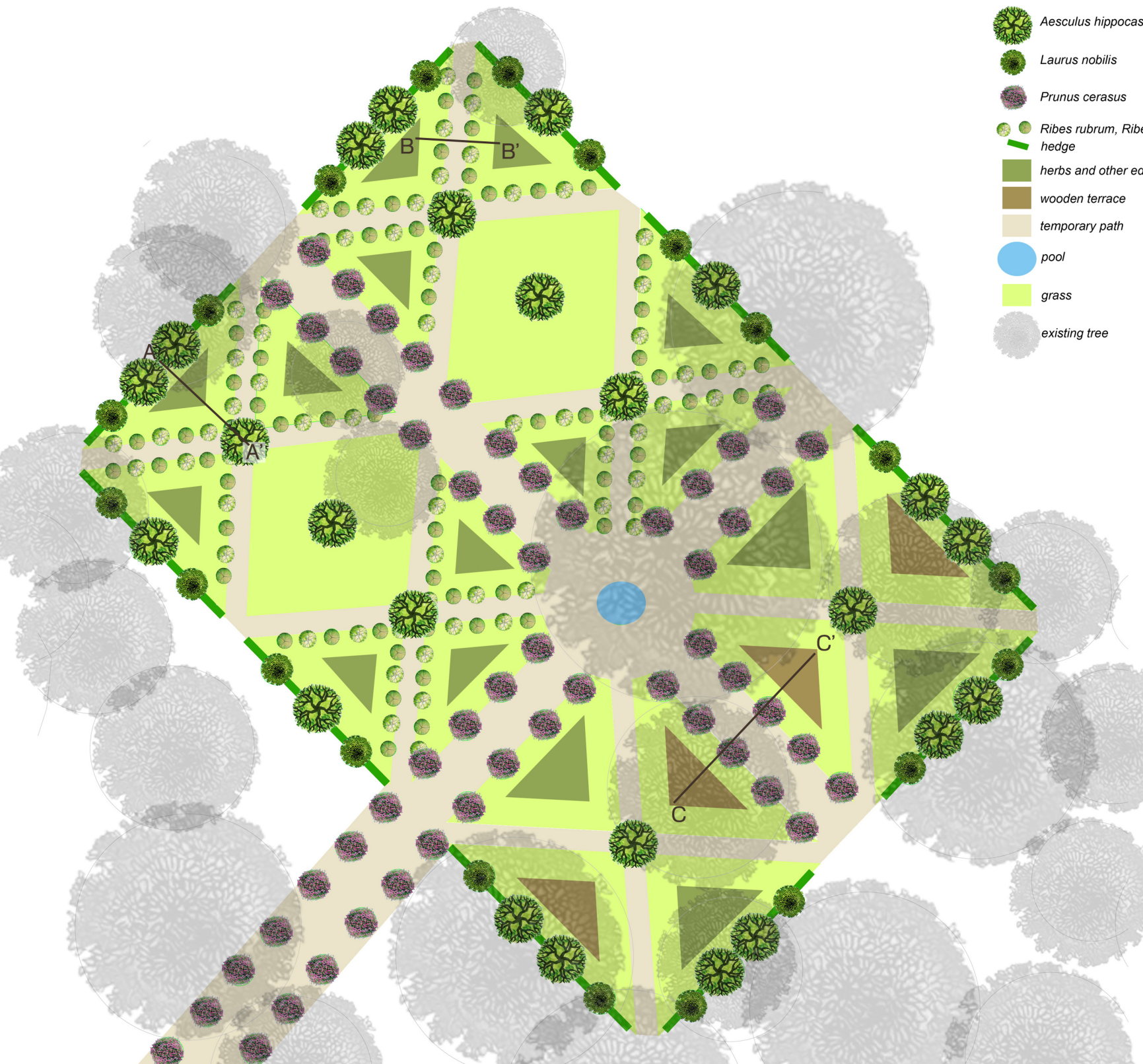
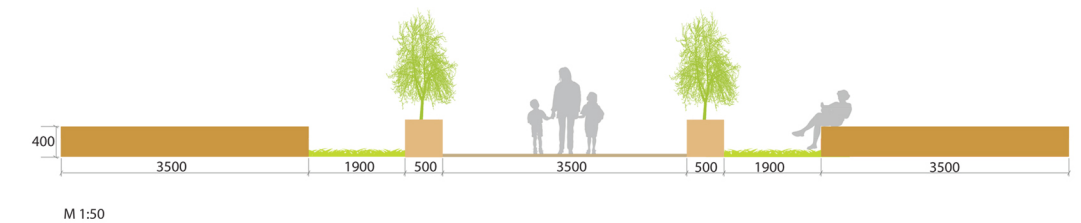
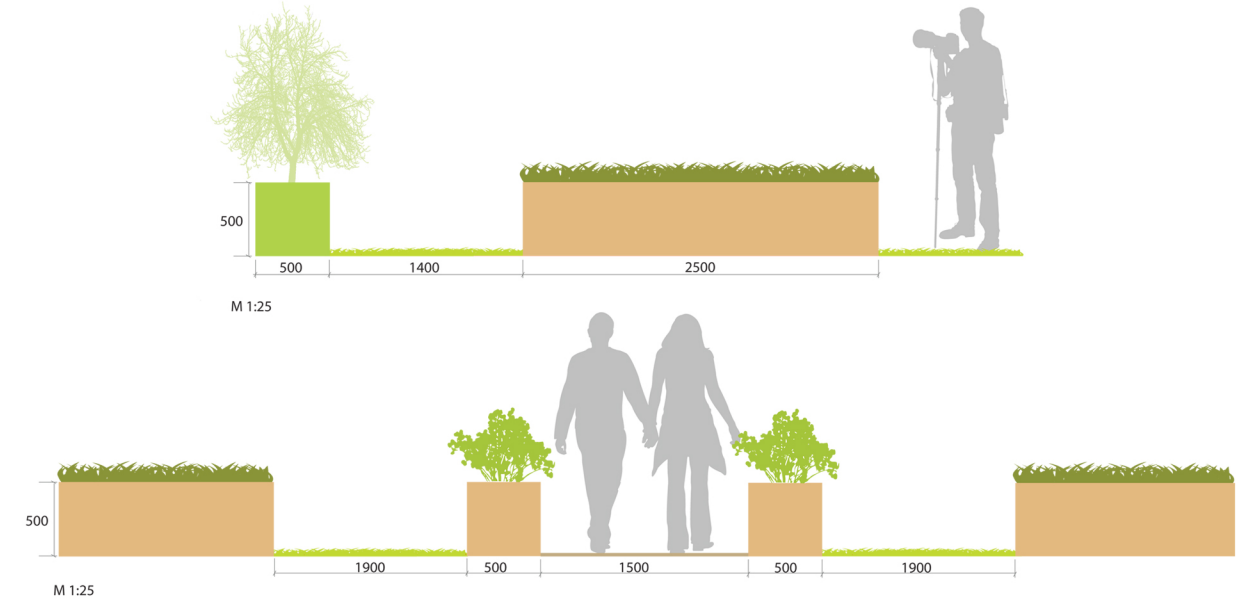


# Temporary fruit and vegetable garden in Kadrioru Park



- Aesculus hippocastanum*
- Laurus nobilis*
- Prunus cerasus*
- Ribes rubrum, Ribes nigrum*
- hedge
- herbs and other edible plants
- wooden terrace
- temporary path
- pool
- grass
- existing tree



The garden is built up from container plants that are easily movable. They are placed in a regular arrangement keeping the original direction of the central axis. As all the big existing trees are kept we decreased the measures of the original garden and placed it so it could get as much light as possible. There are planting boxes for vegetables and wooden sitting platforms in the shady areas for people to sit on. When the installation is over after the summer, the trees can be used in some other place in other ways.

There is a temporary container cherry tree alley alongside Weizenbergi street that lets people know from far that something different and out of the ordinary is going on. They start to walk according to the alley and soon find a temporary garden.



Juula Saar and Triin Orav / MAMA1 / 2011